

# S450H

## 24V Hydraulic operator

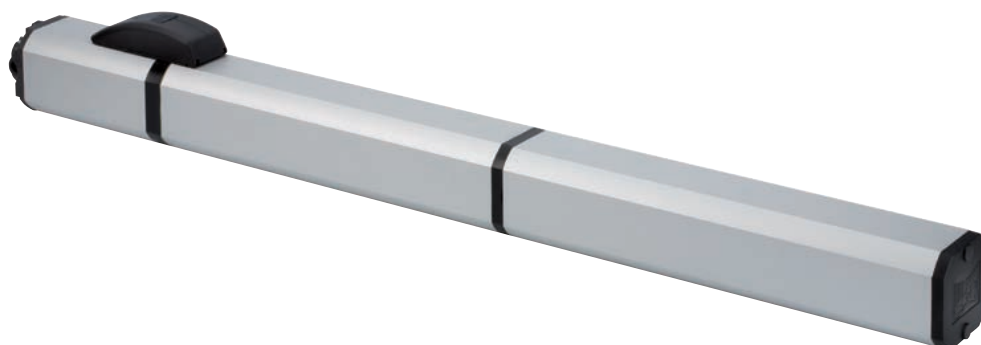


### Max width single leaf

2 - 3 m (with electric lock)

### Use frequency

Continuous use



- Hybrid Technology (Hydraulic + 24V).
- Integrated encoder SAFECoder with anti-crushing function and reverse upon obstacle detection.
- Opening and closing mechanical stops included.




**24V SAFEzone system:**  
S450H + E024S or E124



**GREENTech system:**  
S450H + E124



### DIMENSIONS AND TECHNICAL SPECIFICATIONS

Model	S450H CBAC	S450H SB
Power supply voltage	220-240V~ 50/60 Hz	
Motor	With brushes 24V 	
Max. power	60 W	
Max expressed force	> 5000 N	
Rod max speed	>25 mm/sec	
Rod travel	311 mm	
Max. leaf opening angle	110°	
Operating ambient temperature	-20°C ÷ +55°C	
Protection class	IP55	
Weight	6.5 Kg	
Use frequency	Continuous use	
Max. leaf width	2 m	3 m
Type of oil	FAAC HP OIL	
Mounting brackets	Rear multi-position bracket to be screwed - front adjustable to be screwed	
Dimensions (LxDxH)	1131 x 85 x 119 mm	
Electronic equipment	Not included	

## FAMILY MODELS

Model	Item code
S450H CBAC	104100
S450H SB	104101

## PACKS

**S450H includes:** a hydraulic operator, accessories for installation, a release key.

Typical Installation Examples page. 323

## ELECTRONIC CONTROL UNITS



E124 Electronic control unit with enclosure  
Info at page 147

790284

## ACCESSORIES



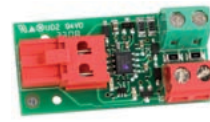
XBAT 24 emergency battery kit ♦

390923



Emergency battery support kit ♦  
(specific for E124)

390926



BUS XIB interface  
(for E045 or E024S control unit with non BUS photocell)

790062

## NOTE

- ♦ It is not compatible with E124 control unit.
- ♦ The 2 Pb standard batteries are not supplied by FAAC and must have a voltage/current of 12 V/4Ah. Dimensions: 90X70X108 mm



Joint for RTA sheath

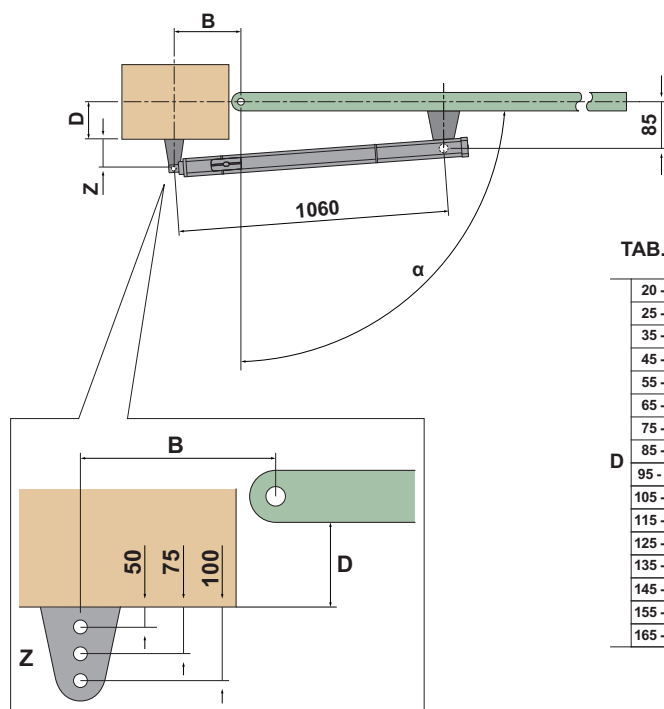
710010



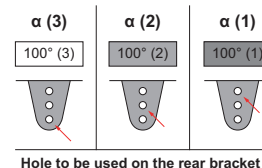
Release lock with customised key

712501001-10

## INSTALLATION DIMENSIONS (MM)



TAB. 1		B										
		75 - 84	85 - 94	95 - 104	105 - 114	115 - 124	125 - 134	135 - 144	145 - 154	155 - 164	165 - 175	
D	20 - 24					110° (3)	110° (3)	115° (3)	108° (3)	100° (3)	100° (3)	
	25 - 34					108° (3)	110° (3)	110° (3)	103° (3)	100° (3)	94° (3)	
	35 - 44				100° (3)	107° (3)	108° (3)	104° (3)	111° (2)	104° (2)	100° (2)	
	45 - 54				100° (3)	105° (3)	106° (3)	100° (3)	106° (2)	100° (2)	96° (2)	
	55 - 64			97° (3)	100° (3)	105° (3)	99° (3)	107° (2)	100° (2)	96° (2)	92° (2)	
	65 - 74		93° (3)	97° (3)	100° (3)	100° (3)	110° (2)	101° (2)	96° (2)	102° (1)	98° (1)	
	75 - 84		90° (3)	95° (3)	100° (3)	105° (2)	102° (2)	111° (1)	105° (1)	98° (1)	94° (1)	
	85 - 94	90° (3)	90° (3)	95° (3)	100° (2)	104° (2)	96° (2)	104° (1)	100° (1)	94° (1)	90° (1)	
	95 - 104	90° (3)	90° (3)	95° (3)	100° (2)	96° (2)	106° (1)	98° (1)	96° (1)	90° (1)		
	105 - 114	90° (3)	90° (3)	95° (2)	97° (2)	103° (1)	99° (1)	94° (1)	92° (1)			
	115 - 124	90° (3)	90° (2)	95° (2)	98° (1)	100° (1)	94° (1)					
	125 - 134	90° (2)	90° (2)	95° (1)	98° (1)	94° (1)						
	135 - 144	90° (2)	90° (2)	95° (1)	94° (1)							
	145 - 154	90° (1)	90° (1)	94° (1)								
	155 - 164	90° (1)	90° (1)									
	165 - 170	90° (1)										



For any other configuration please refer to the technical manual

## OTHER ACCESSORIES

Key operated buttons  
page 174

Safety devices  
page 186

Transmitters and receivers  
page 166

Photocells and columns  
page 183

Flashing lights  
page 194

Various accessories  
page 195